

HYTEK HOSE RETRACTOR MAST



Applies to the following models **ONLY**:

HMAST.F

HMAST.W

Please read carefully **BEFORE** commencing installation.

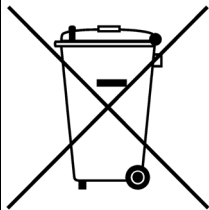
Registered Office: HYTEK (GB) LIMITED,
Delta House, Green Street, Elsenham, Bishop's Stortford,
CM22 6DS UK.

Registered in England No. 1915382

Tel: +44 (0) 1279 815 600

Email: info@hytekgb.com

ENVIRONMENTAL INFORMATION



UK Regulation SI 2013 3113 requires the equipment bearing this symbol on the product and or its packaging must not be disposed of with unsorted municipal waste. The symbol indicates that the product should be disposed of separately from regular household waste streams. It is your responsibility to dispose of this and other electric and electronic equipment via designated collection facilities appointed by the government or local authorities.

IMPORTANT WARNING NOTES

1. Installation of this equipment should be carried out by a qualified fuel installation engineer.
2. The installation must conform to all relevant local authority regulations and standards.

CONTENTS

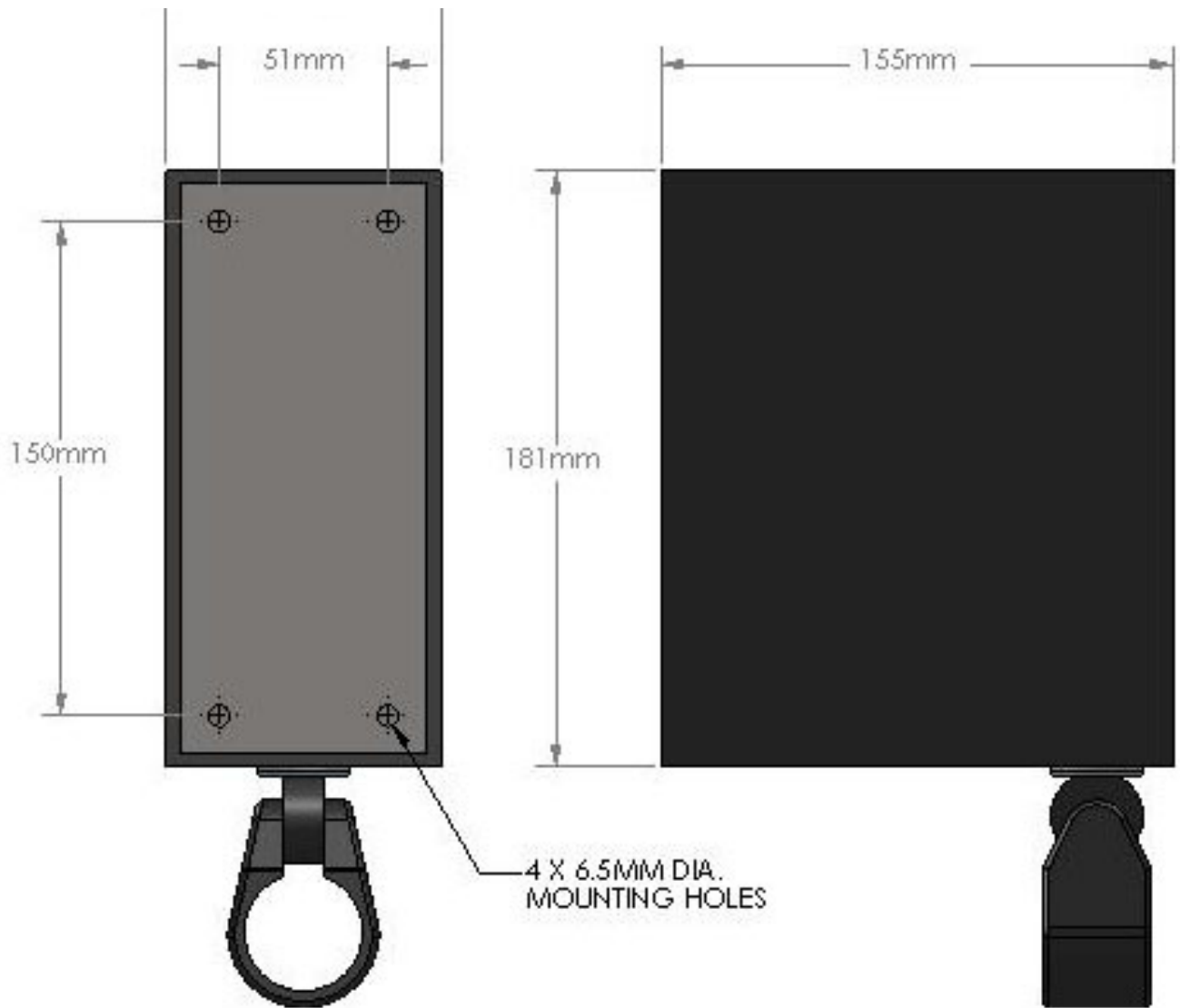
ITEM	QTY	DESCRIPTION	PART No.
1	1 off	Hose mast reel (With hose clamp and sleeve)	HMAST.W
2	1 off	Hose mast top cap (Bolted to above part)	A5188
3	1 off	1½" Pipe clip with fixings	P-CLIP.6G
4	1 off	1½" Four bolt flange	HMAST.FMP

INSTALLATION

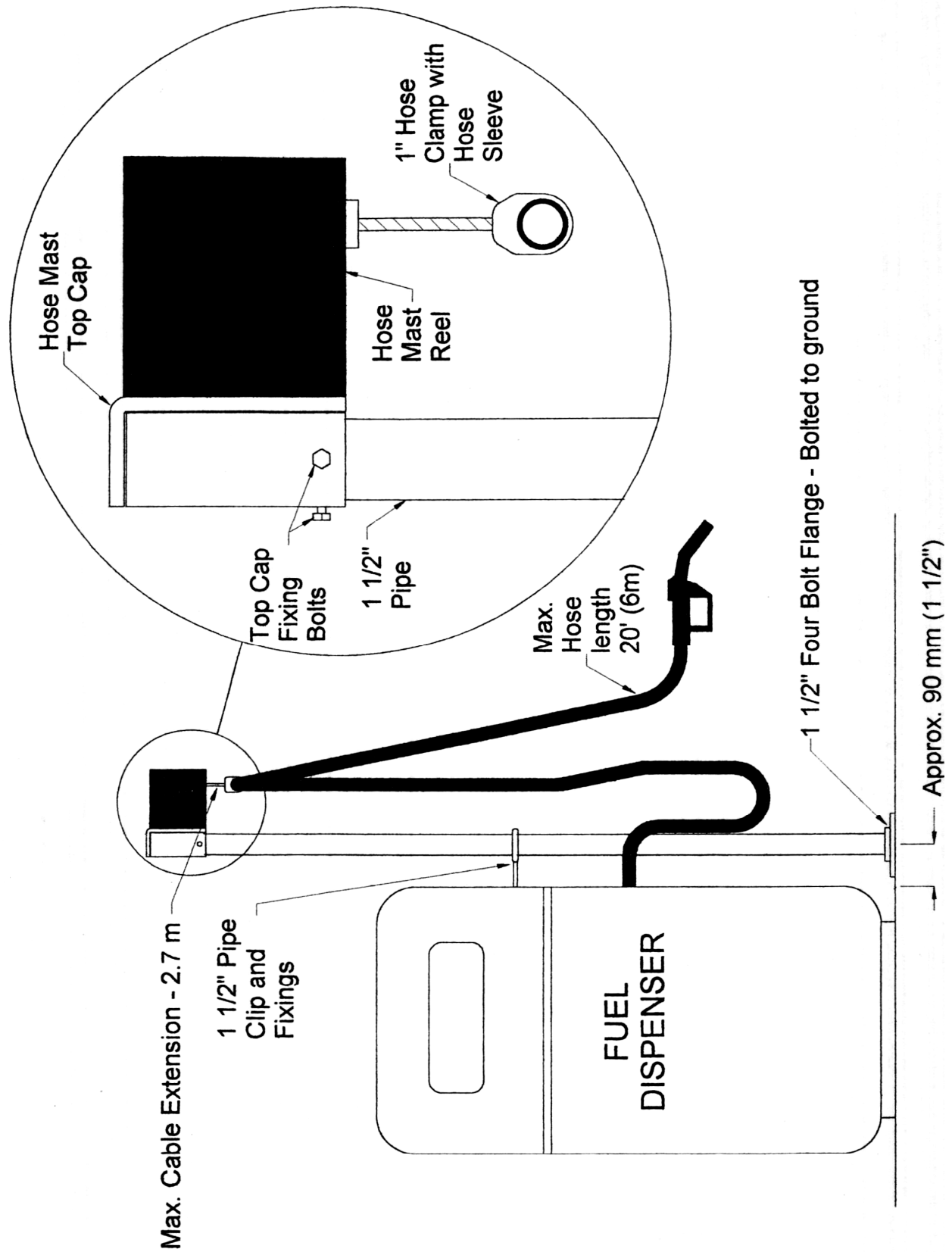
To ensure stability of this product it must be positioned alongside a suitable supporting structure, such as a fuel dispenser or security cabinet.

1. Bolt the 1½” four bolt flange to the ground in the position intended for the hose mast. Ensure that the centre of the flange is positioned approximately 90mm (3½”) from the side of the supporting structure. See diagram opposite.
2. Fit a 2 metre (79”) length of 1½” bore steel pipe into the flange and tighten grub screw. Secure to the supporting structure at a height of approximately 1 metre (40”) using the 1½” pipe clip and fixings. A 12mm fixing hole will have to be drilled in the structure to accommodate the fixings.
3. Slide the hose mast top cap over the top of the length of pipe and secure in position by tightening the top cap fixing bolts. See diagram opposite.
4. Attach the 1” hose clamp to the fuel delivery hose (Maximum hose length 6 metres/20 feet). Use the hose sleeve provided when clamping onto a ¾” bore hose. Ensure the hose clamp is positioned so that the fuel delivery hose is suspended above ground level.

DIMENSIONS



HYTEK HOSE RETRACTOR MAST - RECOMMENDED INSTALLATION



DECLARATION OF CONFORMITY



Company Name: **Hytek (GB) Ltd**

Address: **Delta House
Green Street
Elsenham
Bishop's Stortford
Hertfordshire
CM22 6DS**

Date of Issue: **25th October 2022**

Equipment Details: **HMAST.F and HMAST.W Hose Retractors**

Applicable Directives:
& Standards **SI 2008 1597 Supply of Machinery Safety
Regulations**

Declaration Number: **UK076 Issue 3**

On behalf of the above-named company, I declare under our sole responsibility that, on the date the equipment accompanied by this declaration is placed on the market, the equipment conforms with all technical and regulatory requirements of the above listed directives.

A handwritten signature in cursive script that reads "Clive Wellings".

Clive Wellings, Process Co-ordinator
25th October 2022,
Bishop's Stortford, Herts

THE INFORMATION CONTAINED IN THIS DOCUMENT IS PROTECTED BY COPYRIGHT © AND PROPERTY LAWS AND IS THE SOLE PROPERTY OF HYTEK (GB) LTD. ANY REPRODUCTION IN PART OR AS A WHOLE WITHOUT THE WRITTEN PERMISSION OF HYTEK (GB) LTD IS PROHIBITED.