

## HE1 & HE2 RANGE OF HYTEK ENGINEERED HOSE REELS



Applies to the following models **ONLY:**

**HRO...**

NH.HE1	NH.HCHE2	8.19HE1	20.19HE2	8.25HE1
10.25HE2	14.25HE2	NH.SSHE1	S10.16HE1	S8.25HE1
ONH.SSHC				

Please read carefully **BEFORE** commencing installation.

Registered Office: HYTEK (GB) LIMITED,  
Delta House, Green Street, Elsenham, Bishop's Stortford,  
CM22 6DS UK.

Registered in England No. 1915382

**Tel:** +44 (0) 1279 815 600

**Email:** info@hytekgb.com

## **IMPORTANT WARNING NOTES**

Read carefully and understand all instructions before operating. Failure to follow the safety rules and other basic safety precautions may result in serious personal injury. Keep these instructions in a safe place and on hand so that they can be read when required.

## **SAFETY PRECAUTIONS**

1. Read and understand all instructions.
2. The warnings, cautions, and instructions discussed in this instruction manual cannot cover all possible conditions or situations that could occur whilst operating this hose reel. It must be understood that common sense and caution need to be applied by the operator.
3. Use suitable personal protective equipment when assembling, operating or maintaining this hose reel.
4. Ensure that the reel is properly installed before connecting inlet or outlet hoses.
5. Bleed fluid or air pressure from the system before servicing the reel.
6. Before connecting the reel to the supply ensure that the pressure does not exceed the maximum working pressure rating of the reel.
7. If a leak occurs or if the reel ceases to unwind or rewind remove system pressure immediately.
8. Exposure of skin directly to pressurized air, or fluid could result in severe bodily injury.

## **PRODUCT DESCRIPTION**

Hytek engineered hose reels designed for delivering fuels.

# **INSTALLATION AND USAGE INSTRUCTIONS**

## **Installation of Reel**

1. For overhead ceiling mounting: Install reels at least 16.5 feet (5m) above the floor.
2. If the reel you have purchased does not have hose included, you will need to purchase and attach. Refer to Specifications to determine appropriate hose size and length.
3. You will need to purchase appropriate hardware for mounting your new reel.
  1. The reel base has four 1/2" (or 12.7mm) drilled holes for mounting on a suitable flat surface. Figure 2 is a template showing the correct location of the 4 mounting holes in the base.
  2. The reel is supplied with a hose guide roller bracket. The bracket position may be changed depending on the reel mounting position. Figure 2 shows "Typical Mounting Positions". If bracket position needs to be changed, do the following: (1) Pull out some hose and let reel latch. (2) Remove the bolts that attach the guide arms to the reel's support posts. (3) Rotate guide roller arms to correct position, replace bolts and tighten.
  3. Using the four holes in the base, mount the reel in the desired location. Be sure to use appropriate hardware and tighten securely.
  4. Apply Teflon tape or pipe sealant to supply line threads, attach to reel inlet and tighten. The other end of incoming line can now be connected to desired supply source.
  5. If hose has been supplied with reel: Apply Teflon tape or pipe sealant to outlet fitting on reel hose, then attach to desired nozzle or flow control device. Check connection for leakage, also check hose reel for correct operation.
  6. If hose stopper adjustment is required, pull hose from reel and allow to latch at desired length. Loosen stopper bolts and slide stopper to a position close to the hose guide. Tighten stopper bolts and unlatch the reel.

### **IMPORTANT**

Do not connect rigid pipework into the reel's inlet swivel. Please use a flexible inlet hose (if supplied) or warranty is void.

## **Installation of Hose**

1. Securely stabilize the reel.
2. Facing the swivel fitting side of reel: Turn the drum clockwise, by hand, until the rewind spring is tight, and drum has latched. As an extra precaution while installing new hose, secure drum in the latched position.
3. Insert end of the hose through guide roller bracket, and feed through the opening in the drum flange.
4. Use Teflon tape or pipe sealant on hose fitting threads, screw fitting into swivel and tighten. Note: To avoid damage to the swivel, use a wrench to support the swivel fitting while tightening the hose.
5. Attach hose stopper on the other end of hose, near the outlet fitting.
6. Carefully release drum latch, and slowly allow hose to wind onto the reel.

Note: Final spring tension adjustment is accomplished by adding wraps of hose around the drum (to increase tension) or taking off wraps of hose (to decrease tension). Refer to: Adjustment of Spring Tension.

## **Operation**

1. Check reel for correct operation by slowly pulling out the hose. A “clicking” noise will be heard every half revolution of the drum.
2. To latch the reel, pull out the hose and allow it to retract after hearing the first second or third “click”.
3. To unlatch, slowly pull out the hose until the “clicking” noise stops, then let the hose retract until the hose stop rests against the hose guide. Note: To avoid damage to the reel, always hold on to the hose while it is rewinding.
4. Periodically check the hose condition for wear or damage and check the swivel fitting for leakage. Replace any worn, damaged, or leaking parts.

## **Adjustment of Spring Tension**

1. Pull out approximately 6ft or 2m of hose and allow the drum to latch.
2. Remove hose stopper from hose, and feed hose back through guide.
3. Wrap the pulled hose one time around the drum to increase tension or un-wrap hose one time from drum to decrease tension.
4. Re-insert hose through guide and install stopper onto hose end.
5. Unlatch the Drum and check tension. Pull hose from reel and adjust stopper position if necessary.

## **Replacement of Hose**

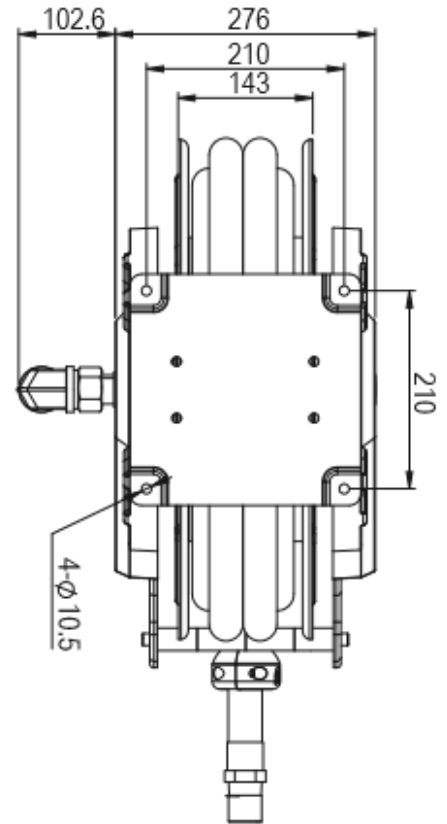
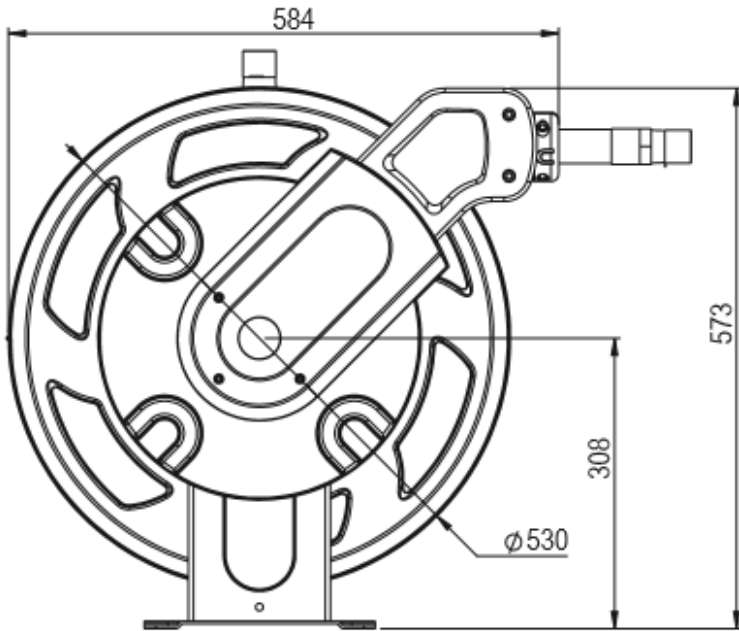
1. Turn off supply to reel.
2. Pull out all the old hose and lock the reel in this position. Caution: Make sure reel drum is securely locked and cannot rotate back.
3. Remove two hose clamps from hose.
4. Carefully disconnect hose from swivel joint on side of reel, or male fitting in axle centre and remove old hose.
5. Feed new hose through guide and opening in drum and connect to swivel. Re-install two hose clamps, on inside and outside of drum flange. Install stopper on other end of hose in the same position as before.
6. Carefully release the drum latch, and slowly allow the hose to wind onto the reel. Note: Final spring adjustment is accomplished by adding or removing wraps of hose around the drum. (Details see spring tension adjustment).

## **Spring Canister Warning**

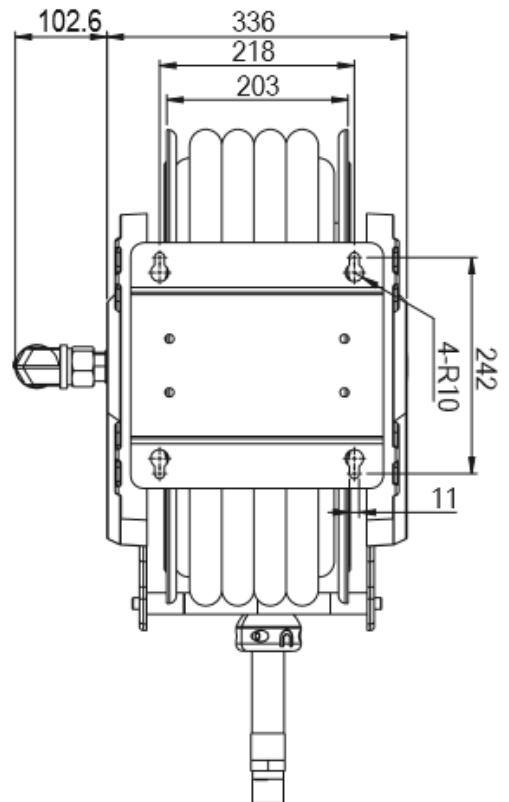
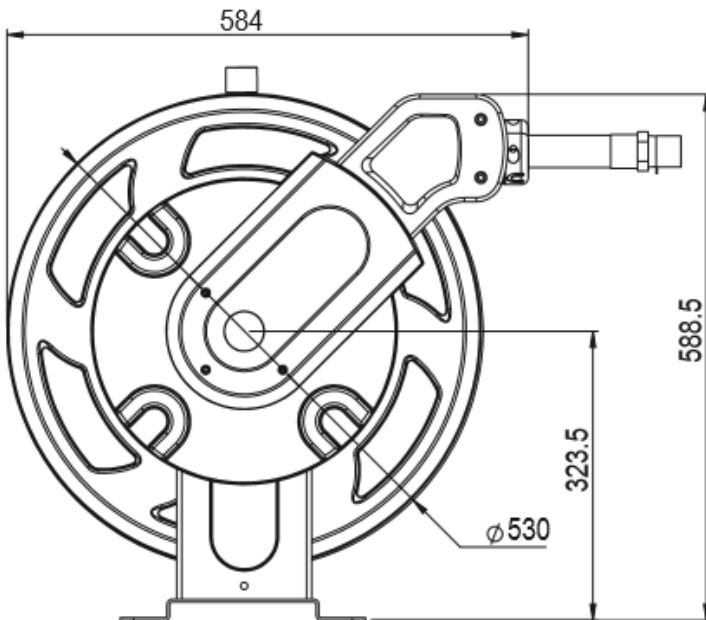
If the rewind spring fails for any reason: For safety reasons, the manufacturer strongly recommends the replacement of the spring canister be carried out by a professional mechanic.

# MOUNTING DIMENSIONS

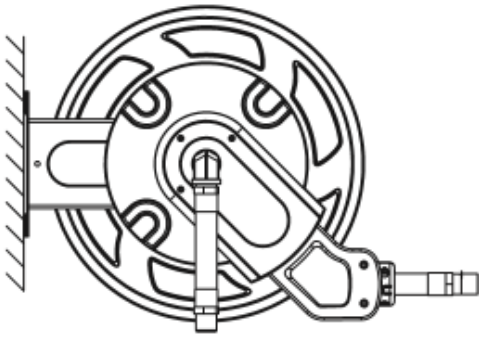
## HE1 RANGE



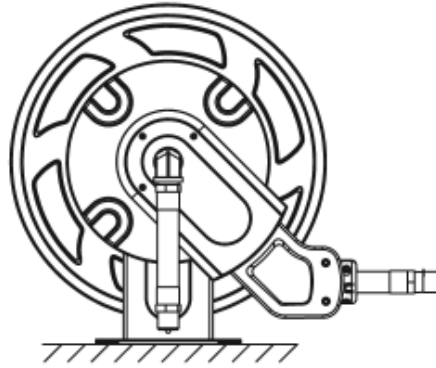
## HE2 RANGE



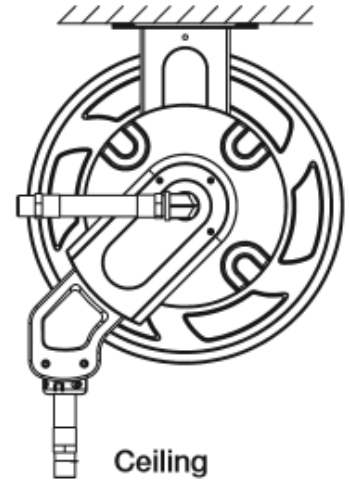
# **MOUNTING - WALL, FLOOR, CEILING**



Wall

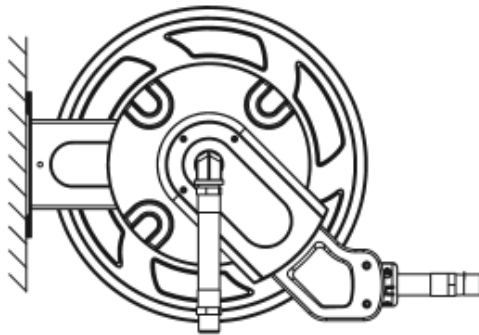


Floor

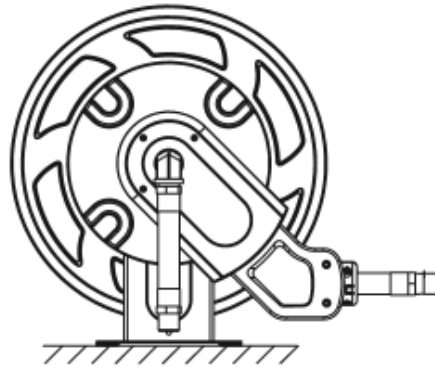


Ceiling

2863 Wall & Floor



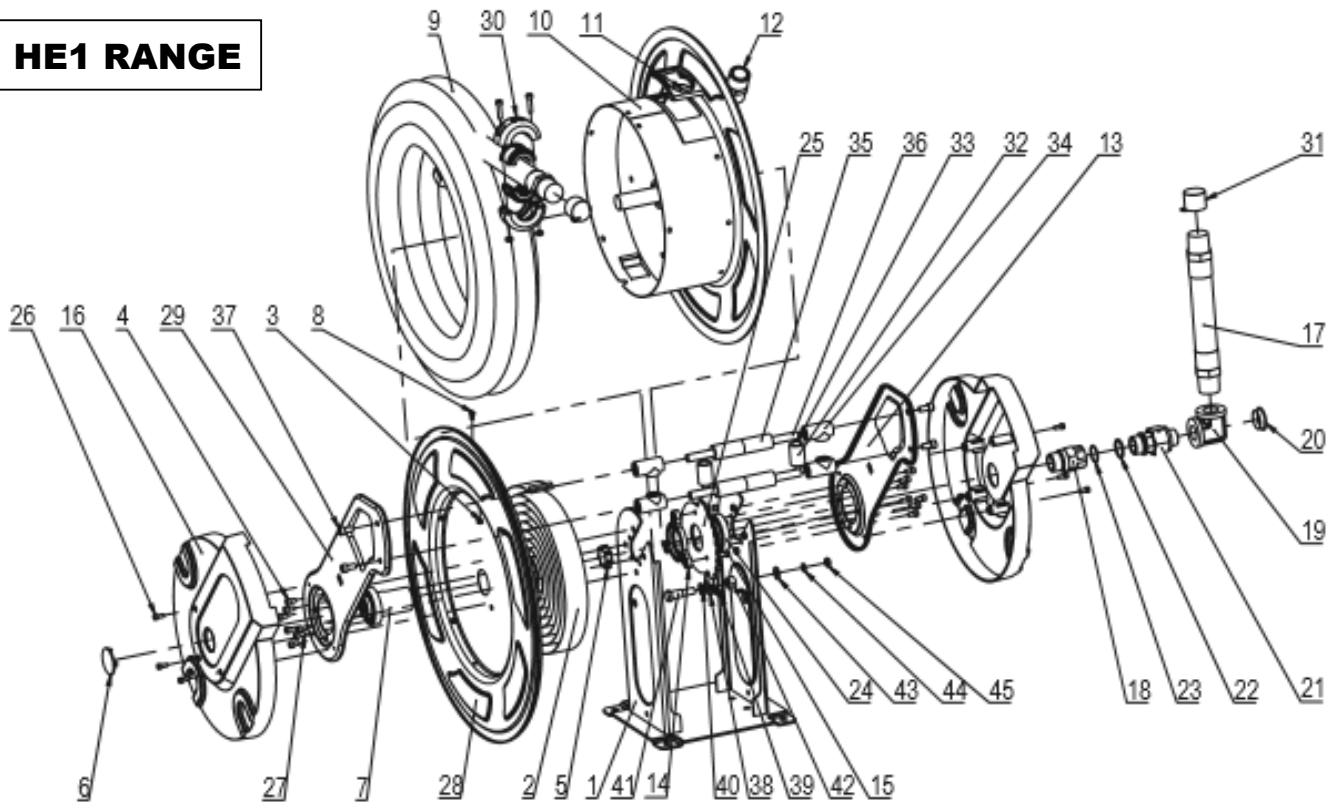
Wall



Floor

# EXPLODED DIAGRAMS (Contact Hytek for spares)

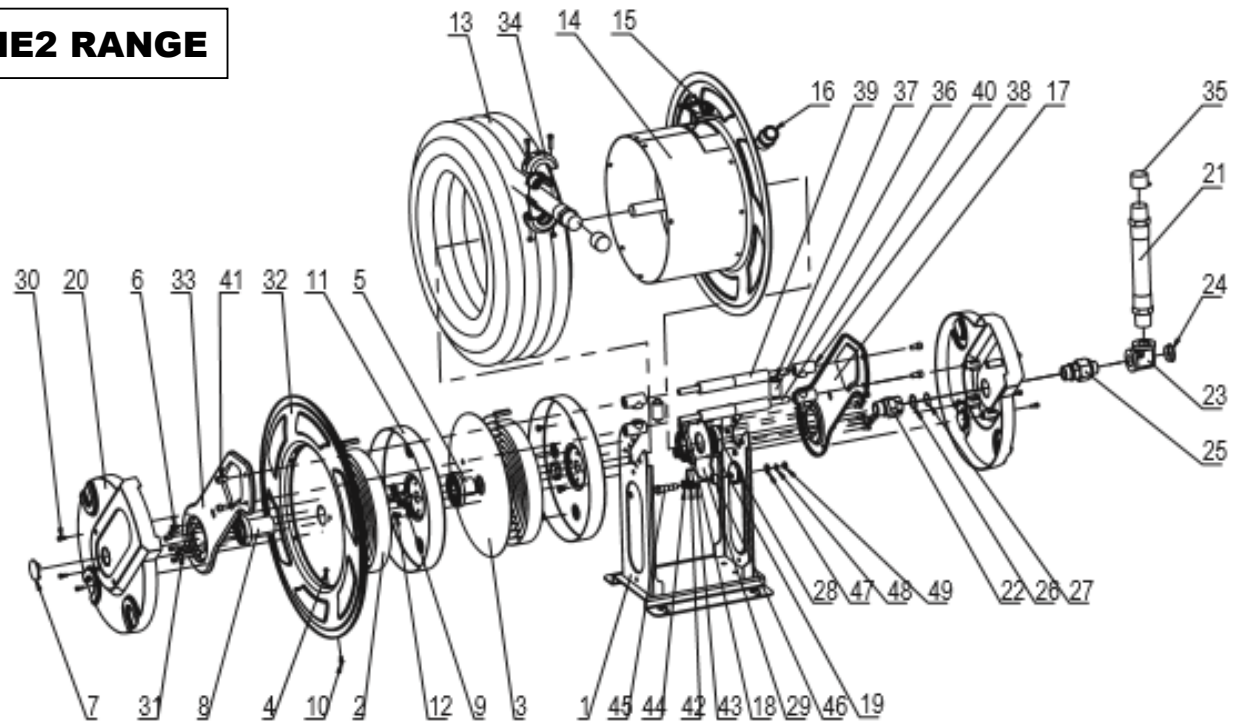
## HE1 RANGE



Part No.	Description	Q'ty	Part No.	Description	Q'ty
1	Base Assembly	1	24	Axle Sleeve	1
2	Spring	1	25	Locking Ring	1
3	Nut	6	26	Screw	6
4	Screw	8	27	Screw	6
5	Axle Sleeve	1	28	Drum 1	1
6	Protection Cover	1	29	Support Plate 1	1
7	Spring Core	1	30	Bumper Block	1
8	Screw	6	31	Thread protector	2
9	Hose Assembly	1	32	Roller	2
10	Drum Assembly	1	33	Roller Axle	2
11	Protection Base	1	34	Roller Base	4
12	Fitting	1	35	Roller	4
13	Support plate 2	1	36	Roller Axle	2
14	Locking Ring Gasket	1	37	Screw	4
15	Screw	3	38	Ratchet	1
16	End Cap	2	39	Ratchet Spring	1
17	Hose Assembly	1	40	Washer	1
18	Convert Fitting	1	41	Bolt	1
19	Fitting	1	42	Washer	1
20	Thread protector	1	43	Washer	1
21	Valve Assembly	1	44	Ball	1
22	O-Ring	1	45	Nut	1
23	O-Ring	1			



## HE2 RANGE



Part No.	Description	Q'ty	Part No.	Description	Q'ty
1	Base Assembly	1	26	O-Ring	1
2	Spring	2	27	O-Ring	1
3	Spring Drum Cover	1	28	Axle Sleeve	1
4	Nut	6	29	Locking Ring	1
5	Spring Core	1	30	Screw	6
6	Screw	8	31	Screw	6
7	Protection Cover	1	32	Drum 1	1
8	Spring Core	1	33	Support Plate 1	1
9	Axle Sleeve	2	34	Bumper Block	1
10	Screw	6	35	Thread protector	2
11	Spring Drum Assembly	2	36	Roller	2
12	Screw	8	37	Roller Axle	2
13	Hose Assembly	1	38	Roller Base	4
14	Drum Assembly	1	39	Roller	4
15	Protection Base	1	40	Roller Axle	2
16	Fitting	1	41	Screw	4
17	Support plate 2	1	42	Ratchet	1
18	Locking Ring Gasket	1	43	Ratchet Spring	1
19	Screw	3	44	Washer	1
20	End Cap	2	45	Bolt	1
21	Hose Assembly	1	46	Washer	1
22	Convert Fitting	1	47	Washer	1
23	Fitting	1	48	Ball	1
24	Thread protector	1	49	Nut	1
25	Valve Assembly	1			

# **TECHNICAL DATA & STOCK CODES**

## **BARE REELS**

Stk Code	Description	Max Pressure
<b>HRONH.HE1</b>	<b>Bare reel</b> - no hose fitted with 1" BSPP inlet, takes 12m x 3/4" or 8m x 1" hose	300psi (20 bar)
<b>HRONH.HCHE2</b>	<b>Bare reel</b> - no hose fitted with 1" BSPP inlet, takes 20m x 3/4" or 15m x 1" hose	300psi (20 bar)

### **STAINLESS STEEL REEL OPTION:**

**HRONH.SSHE1** - S/S hose reel bare takes 12m x 3/4" / 8m x 1" hose.

## **3/4" REELS**

Stk Code	Description	Hose Length	Ends	Inlet Hose	Max Pressure
<b>HRO8.19HE1</b>	Hose reel with 8m x 3/4" hose	8m	3/4" M BSPP	2m	232psi (16 bar)
<b>HRO20.19HE2</b>	Hose reel with 20m x 3/4" hose	20m	3/4" M BSPP	2m	232psi (16 bar)

### **ADBLUE REEL OPTION:**

**HROS10.16HE1** - Adblue® S/S reel, 10m x 16mm hose c/w 1" female ends.

## **1" REELS**

Stk Code	Description	Hose length	Ends	Inlet Hose	Max Pressure
<b>HRO8.25HE1</b>	Hose reel with 8m x 1" hose	8m	1" M BSPP	2m	232psi (16 bar)
<b>HRO10.25HE2</b>	Hose reel with 10m x 1" hose	10m	1" M BSPP	2m	232psi (16 bar)
<b>HRO14.25HE2</b>	Hose reel with 14m x 1" hose	14m	1" M BSPP	2m	232psi (16 bar)

### **STAINLESS STEEL REEL OPTION:**

**HROS8.25HE1** - Hytek Eng S/S fuel hose reel, 8m x 25mm hose fixed bracket.

## **HOSE ASSEMBLIES FOR REELS**

Stk Code	Description	Hose Length	Ends	Max Pressure
<b>HRO8.19TBH</b>	Hose assembly only	8m	3/4" F BSPP swivel / 3/4" M BSPP	232psi (16 bar)
<b>HRO20.19TBH</b>	Hose assembly only	20m	3/4" F BSPP swivel / 3/4" M BSPP	232psi (16 bar)
<b>HRO2.19TBH</b>	Inlet hose assembly only	2m	3/4" F BSPP swivel / 3/4" M BSPP	232psi (16 bar)
<b>HRO8.25TBH</b>	Hose assembly only	8m	1" F BSPP swivel / 1" M BSPP	232psi (16 bar)
<b>HRO10.25TBH</b>	Hose assembly only	10m	1" F BSPP swivel / 1" M BSPP	232psi (16 bar)
<b>HRO14.25TBH</b>	Hose assembly only	14m	1" F BSPP swivel / 1" M BSPP	232psi (16 bar)
<b>HRO2.25TBH</b>	Inlet hose assembly only	2m	1" F BSPP swivel / 1" M BSPP	232psi (16 bar)

**BLANK PAGE**

## **DECLARATION OF CONFORMITY**



Company Name: **Hytek (GB) Ltd**

Address: **Delta House, Green Street  
Elsenham, Bishops Stortford  
Hertfordshire  
CM22 6DS, UK**

Date of Issue: **12<sup>th</sup> December 2017**

Equipment Details: **Hytek's range of retractable hose reels**

Applicable Directives: **2006/42/EC Machinery Directive  
& Standards**

**2014/68/EU Pressure Equipment Directive**

Declaration Number: **EU086**

On behalf of the above-named company, I declare under our sole responsibility that, on the date the equipment accompanied by this declaration is placed on the market, the equipment conforms with all technical and regulatory requirements of the above listed directives.

*Clive Wellings*

Clive Wellings, Technical Manager

THE INFORMATION CONTAINED IN THIS DOCUMENT IS PROTECTED BY COPYRIGHT © AND PROPERTY LAWS AND IS THE SOLE PROPERTY OF HYTEK (GB) LTD. ANY REPRODUCTION IN PART OR AS A WHOLE WITHOUT THE WRITTEN PERMISSION OF HYTEK (GB) LTD IS PROHIBITED.