

<b>MODEL</b>	<b>Tuffa Effluent Tank</b>
<b>CAPACITY (L):</b>	<b>2300</b>
<b>LENGTH (mm):</b>	<b>3100</b>
<b>WIDTH (mm):</b>	<b>2460</b>
<b>HEIGHT (mm):</b>	<b>450</b>
<b>WEIGHT (kg):</b>	<b>140</b>
<b>MATERIAL:</b>	<b>Lower Linear Density Polyethylene</b>



This high capacity 2,300 litre effluent storage tank is easy to maintain and transport.

It is a septic unit designed to fit under portable cabins where mains effluent/drainage on site is not available. This tank fits perfectly underneath cabins of all descriptions.

They are an excellent waste storage tank which can be sited underneath toilet blocks, kitchens, canteens and welfare units.

Tanks are space-saving and can ideally be stored on end.

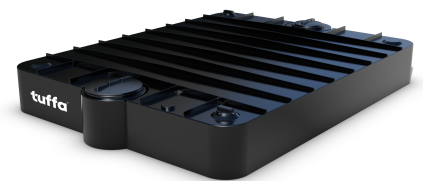
## SPECIFICATION

- ▶ 2 x 5" inspection lids (waste entry point)
- ▶ 1 x 12" inspection lids (waste removal point)
- ▶ 1 x 18" inspection lid (waste removal point)
- ▶ 4 x tank handles
- ▶ 2 x Forsheda seals
- ▶ Convenient lifting eyes
- ▶ Internal bracing

## OPTIONAL EXTRAS

- ▶ Effluent tank linking kit:
  - ▶ 2 x 138mm - 110mm Forsheda seal
  - ▶ 2 x 110mm drain plug

**TANKS CAN BE INTERLINKED TO ACHIEVE LARGER CAPACITIES**



# tuffa®

Tuffa UK Limited  
 Dovefields Industrial Estate,  
 Derby Road, Uttoxeter  
 Staffs, ST14 8SW

