

Energy Management Solutions
UK & Ireland



Kingspan 9200I Diesel Storage & Dispensing Tank

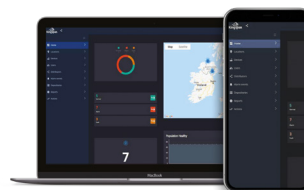


Capacity (L/Gal)	Length (mm)	Width (mm)	Height (mm)
9,200 /2,024	3,150	2,510	2,810

Watchman Access: Fuel Management System

Included with PRO Specification

- Cloud Based Technology
- Engineer Site Visit†
- Plug & Play Design
- Starter pack of 40 Cards & Fobs
- Roaming SIM Card††
- Access to Web Page to View Data
- Full Technical Support
- Free Online Consultation



* 10 year warranty applies to tanks only.

† Engineer will check installation and perform various system checks (UK mainland only).

†† SIM card has a 5 year contract built into price of tank.

Watchman Access is for customer's own use and not suitable for resale as is not 'weights & measures' approved.

kingspan.com



Kingspan 9200I

Diesel Storage & Dispensing Tank

Specification	Advanced* 9200L	PRO 9200L
Black Door Lockable	•	•
72 lpm** Pump 230V	•	•
Digital Flowmeter	•	•
6m hose	•	•
1" Suction Line	•	•
Auto Shut-Off Nozzle	•	•
Nozzle Holder	•	
Nozzle Holder c/w Auto Pump Switch		•
10 Micron Particle & Water Filter	•	•
2" BSP Coupling for filling	•	•
Drip tray in Cabinet	•	•
Spillstop Mechanical Overfill Protection	•	•
Motion Sensor Light	•	•
Junction Box for Wiring	•	•
Watchman Uni RX Electronic Level Gauge	•	
Pressure Probe Level Sensor	•	•
Watchman Access Fuel Management System		•
Codes	1010666	1010693
Optional Extras		
100 lpm** Pump 230V	•	•
	1010688	1010698
Retractable 8m hose reel	•	•
	1010667	1010694
100 lpm** Pump 230V with Retractable 8m hose reel	•	•
	1010689	1010699

*Advanced specification can also come with 12V (50lpm) or 110V (56lpm) pumps without light or Watchman Sonic Advanced (available on request).
**Maximum across pump flow rate as defined by pump manufacturer. Actual flowrate will be less.

Head Office

180 Gilford Road, Portadown,
Co. Armagh, BT63 5LF
United Kingdom
E: tankinfo@kingspan.co.uk
T: +44 (0) 28 3836 4444

Ireland Office

Dundalk Road
Carrickmacross
Co. Monaghan
E: tankinfo@kingspan.ie
T: +353 (0) 42 969 0022

kingspan.com



We take every care to ensure that the information in this document is accurate at the point of publication. Specification may vary (within a small parameter) due to manufacturing process variations or environmental conditions. All images are for illustration purposes only and should not be taken as binding. The actual product may vary, and specification/ dimensions/ colour/ other attributes may differ. To ensure you are viewing the most recent and accurate product information, please visit www.kingspan.com. @Kingspan and the Lion Device are Registered Trademarks of the Kingspan Group plc in the UK, Ireland and other countries. All rights reserved. Registered in Country No.NI017631. Registered Office: 180 Gilford Road, Portadown, Co. Armagh, BT63 5LF. VAT GB412 5124 03